

# WILBERFORCE PRIMARY SCHOOL

Community Outdoor Multi Use Games Area (MUGA)

# CONSULTATION REPORT



SEPTEMBER 2024

# Table of Contents

Background	<b><u>3</u></b>
Aim and Methodology	<b><u>5</u></b>
The Proposal	<b><u>7</u></b>
What You Told Us	<b><u>8</u></b>
Your Concerns	<b><u>10</u></b>
Your Solutions	<b><u>11</u></b>
Summary	<b><u>13</u></b>

# Background

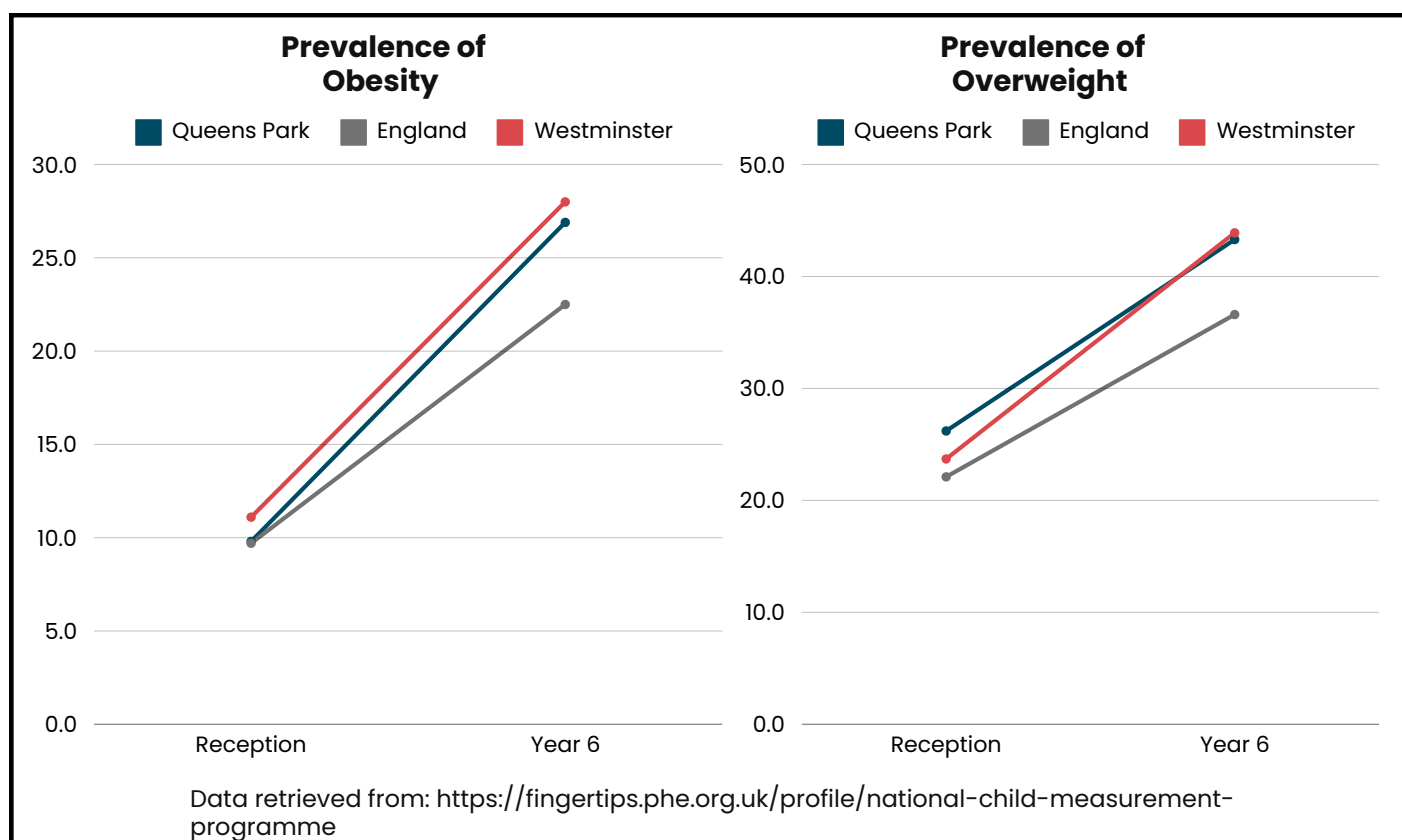
This project aims to provide communities with more access to quality leisure facilities in order to encourage increased levels of physical activity, and help individuals to achieve and maintain a healthy weight. As obesity continues to be a long term health challenge faced by a significant number of residents across Westminster (**16.2% classified as obese; 47.9% classified as overweight**), this is one of many initiatives which aims to empower adults and children to live healthier lives.

Figure 1 shows some statistics from the National Child Measurement Programme which provide an overview of the health of the younger population between the academic years of 2020/21 and 2022/23. Within Queens Park ward, there are a large number of children in reception which are classified as obese (9.8%) and overweight (26.2%). This significantly increases by the time children are in year 6, to 26.9% and 43.3% respectively. This means by the time children are entering secondary school, a significant majority of them are at least overweight. As the figure shows, this is above the average of the country. Thus, it is imperative that the council seek to put in place new assets to help combat this.

The new multi-use games area (MUGA) at Wilberforce Primary School will provide children with access to a high quality facility which helps to improve their health and wellbeing. In line with our Playing Pitch Strategy, making this pitch available for use outside of school hours will extend these health and wellbeing improvements to the wider community also. Additionally, this new facility will take steps towards achieving the Fairer Westminster outcome of ensuring residents have access to high quality leisure services within 15-minutes distance from their home. Prior feedback received from residents of Queens Park and Harrow Road wards on their community priorities (Community Priorities Programme Ward Panels, May 2024), identified two of their top priorities to be:

- The need for more recreational facilities for children of all ages
- Increasing the available spaces for young people

**Figure 1. Prevalence of Obesity and Overweight Children in Queens Park, Westminster and England**



This project aids in the meeting of these priorities not only for children and young people, but also for adults. The MUGA will encourage residents to play sport and be physically active, meet the need for additional spaces for local groups to utilise and help to reduce the overuse of other facilities (Paddington Recreation Ground, St. Augustine's and Academy Sport) in neighbouring wards.

# Aim and Methodology

This consultation aimed to engage with residents on our latest proposal for the development of a MUGA at the Wilberforce Primary School. There were a series of engagements with a variety of residents which took place over 4 weeks, between Wednesday 26th June and Saturday 3rd August . These included:

- Door knocking along Herries and Beethoven Streets
- Online listening survey
- Coffee morning at Wilberforce Primary School
- 3 in-person drop-in sessions
- Stall at Queens Park Community Council (QPCC) Festival

Both the door knocking and online listening survey aimed to gather initial thoughts around the project, while the in-person drop-in sessions aimed to delve deeper into concerns and ideas to resolve them. Figure 2 provides an overview of the tasks which were completed throughout the engagement.

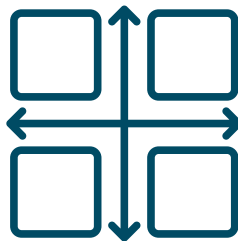
**Figure 2. Engagement Activities**



**1**

## **Listening Survey**

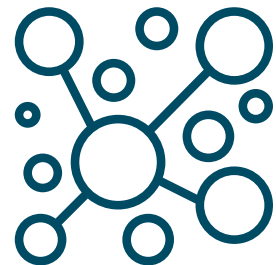
What do you think?  
Excitements &  
Concerns?



**2**

## **Connections Matrix**

How can we solve  
these concerns?



**3**

## **Clustering**

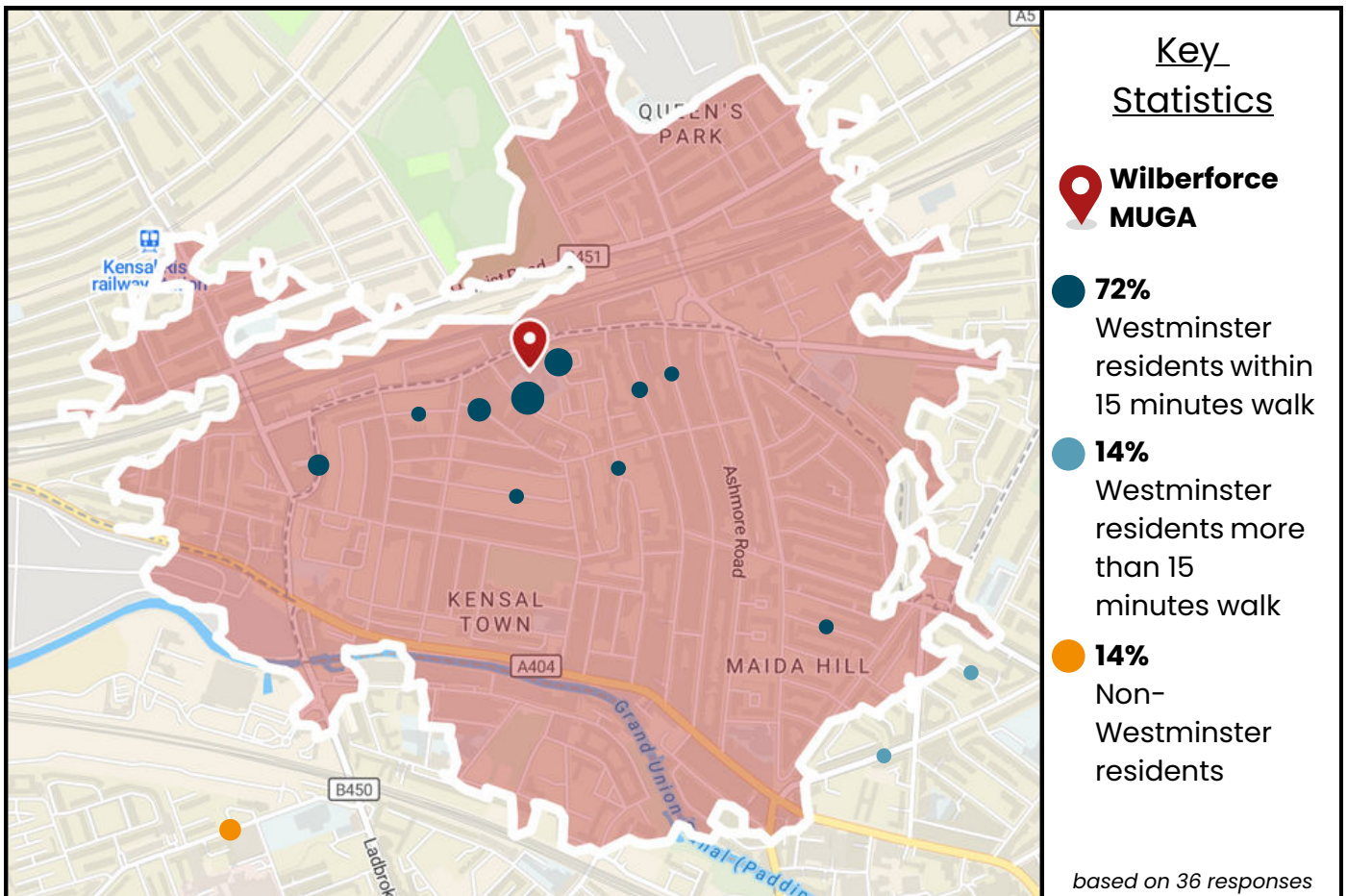
Are there ideas that  
can be grouped?

The stall at the Queens Park Community Council Festival aimed to raise awareness of the project and give residents a quick opportunity to provide their feedback in the form a dot exercise to indicate either their support or opposition of the project proposal.

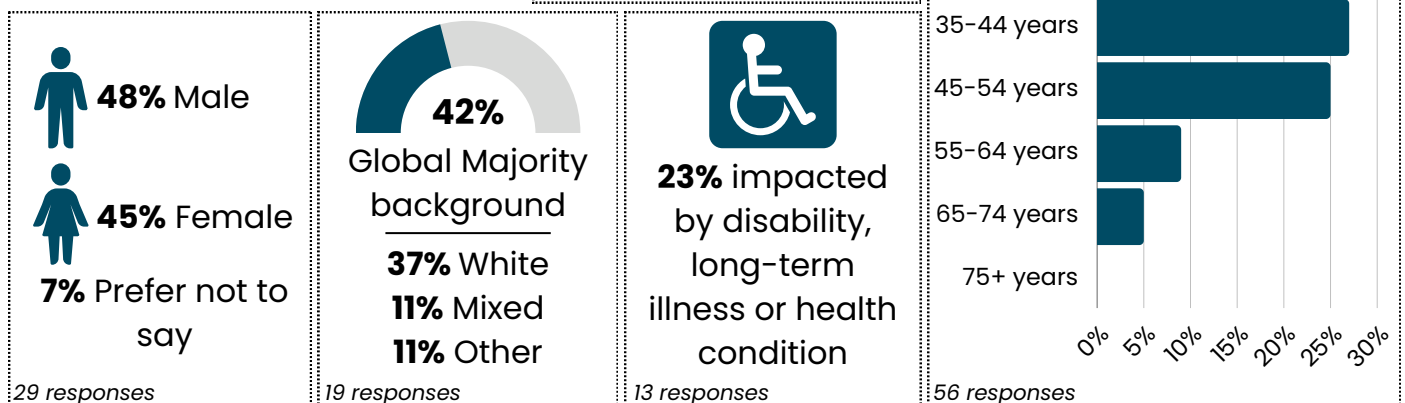
## Demographics

60 participants engaged with the door knocking and online listening survey, 23 participants with the in-person engagement sessions and 95 participants with our stall at the QPCC festival. Thus, a total of **178 residents provided feedback**. Below is a breakdown from all participants who provided their demographic information.

**Figure 3a. Participant Location Breakdown**



**Figure 3b. Participant Demography: Dependents, Age, Gender, Ethnicity and Disability**



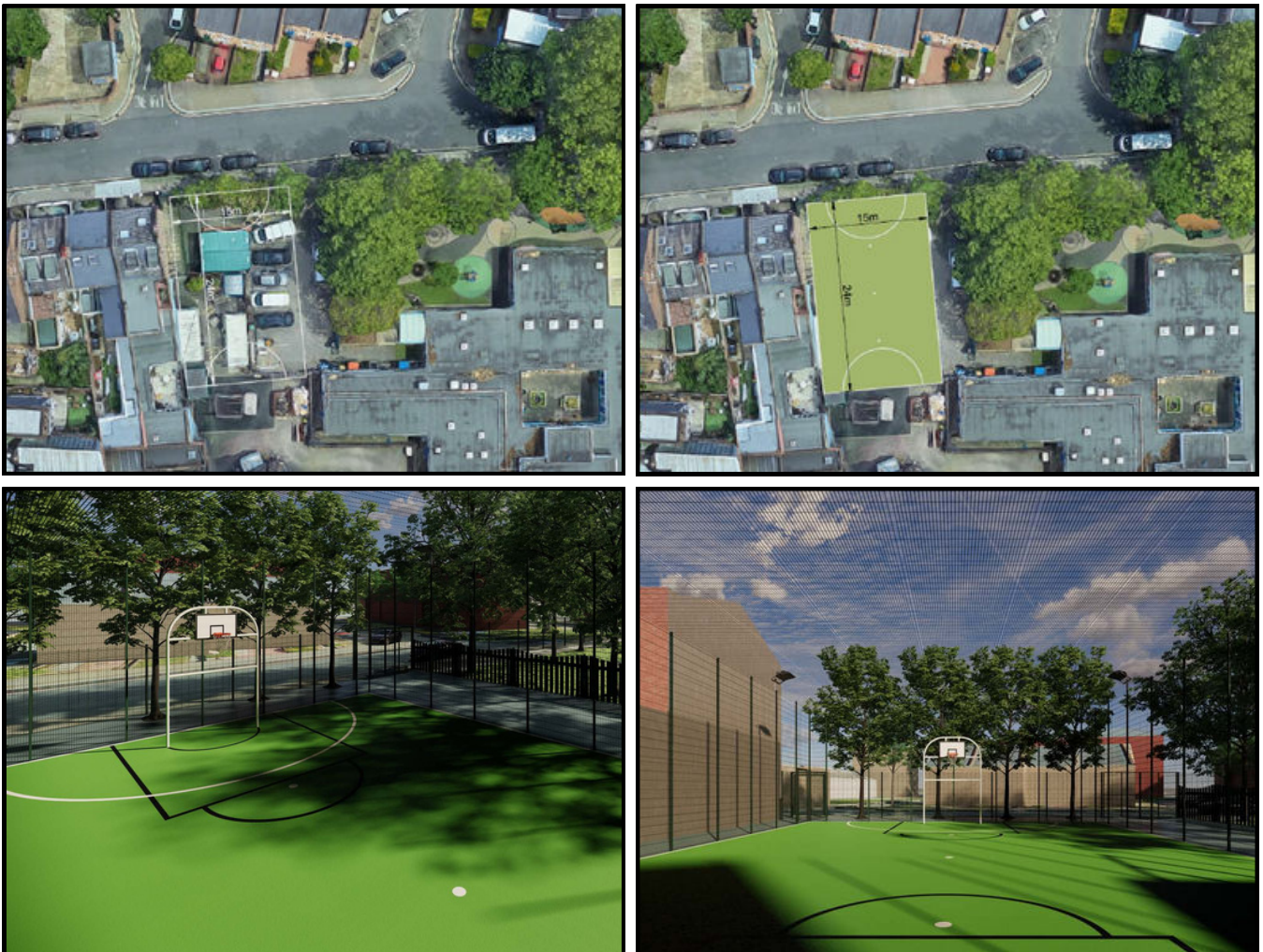


# The Proposal

It was proposed that the MUGA be located in a section of the current school car park (Figure 4). This would ensure that the school would lose no existing play areas or green spaces. The MUGA would include the following features:

- All-weather pitch
- Just smaller than 5-a-side
- 5m high acoustic attenuated fencing (noise control)
- Roof netting to prevent balls going into residential areas
- LED floodlights
- Aisle between MUGA and houses to buffer noise
- Standalone pitch gate - no access to the school needed
- Line markings for multiple sports including football, basketball and netball
- Dual football and basketball posts

**Figure 4. Proposed MUGA Location and 3D Render**



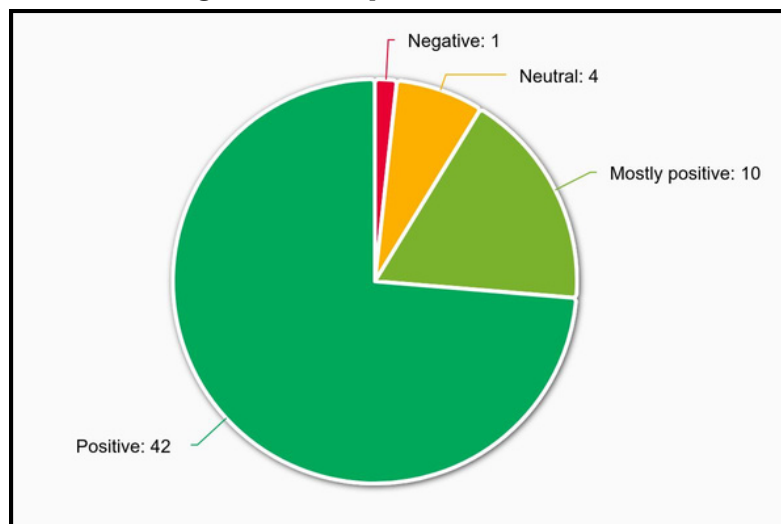
## What You Told Us

For the first phase of engagement, residents were asked three questions:

1. Overall, how did they feel about the project?
2. What excites them about the project?
3. What concerns them about the project?

Majority of responses to the project proposal were very supportive, with **3 of 4 participants** voting that they felt **positive** about the project (Figure 5). Additionally, there were **51 comments** (of a possible 65) expressing varying aspects that residents were excited about. These comments are summarised in Figure 6.

### Figure 5. Proposal Sentiment



**Figure 6. Responses to 'What Excites you about new community MUGA at Wilberforce School?'**





At the QPCC festival, there were **95 stickers of support** placed on our proposal board, which can be viewed in the image below.



# Your Concerns

In total, 48 residents voiced concerns which highlighted 16 subthemes and four themes. A summary of these can be viewed in Table 1. Other subthemes not listed in the table include the pitch appearance (2 references), missing equipment – tennis (1 reference) and toilet access (1 reference).

**Table 1. Summary of Concerns**

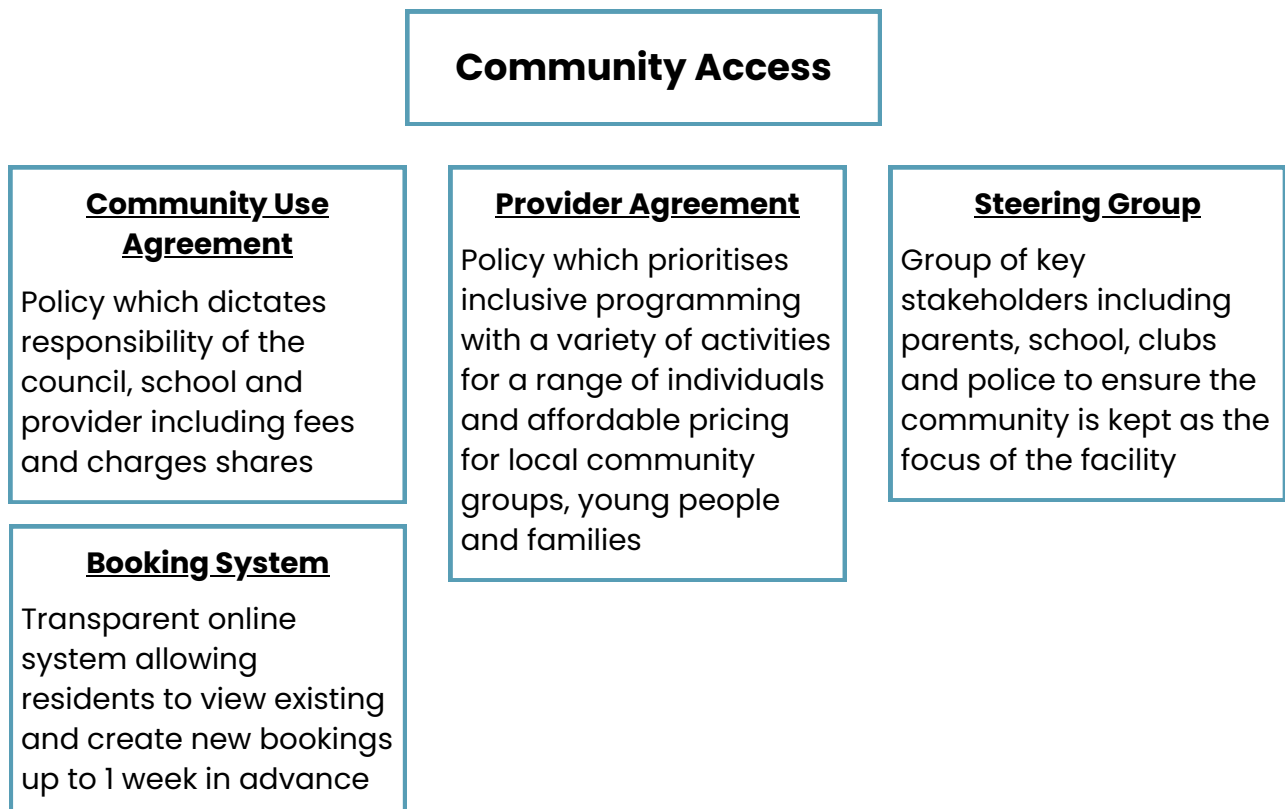
Theme	Subtheme	Number of references
Community Access	<ul style="list-style-type: none"> <li>• Priority for local community groups</li> <li>• Affordability/Community rates</li> <li>• Fair access for hyperlocal young residents and families</li> <li>• Balanced programme for all including disabled and SEN groups</li> </ul>	3 6 4 5
Disturbance	<ul style="list-style-type: none"> <li>• Noise</li> <li>• Light pollution</li> <li>• Fair operational hours – evenings, weekends and holidays</li> <li>• Parking and traffic</li> </ul>	4 1 1 3
Maintenance	<ul style="list-style-type: none"> <li>• Ongoing maintenance of facility (including cleaning)</li> <li>• Pitch/equipment damage</li> </ul>	5 3
Safety and Security	<ul style="list-style-type: none"> <li>• Safeguarding of students</li> <li>• First Aid kit availability</li> <li>• Sustainable pitch materials</li> <li>• Equipment hazard – free standing posts</li> </ul>	4 1 2 1

# Your Solutions

The final phase of the consultation aimed to find solutions to the four main themes of concerns which were raised. Residents were provided with three categories which should frame their solutions, plus a wild card category to cover solutions which may not fit the other categories. These categories were:

1. Policies, Laws & Procedures: what rules can be put in place to help solve the concern
2. People & Partnerships: who and/or what partnerships can be formed to help solve the concern
3. Events, Games & Programmes: are there any events, games or programmes that can assist with solving the concern

Over a series of four workshops with a range of residents, a total of 56 solutions were provided. These were grouped based on their similarities to form a final list of 10. Each solution group is listed in relation to the concern theme which it solves. As some solution groups covered multiple concerns, they are listed multiple times.



## **Disturbance**

### **Provider Agreement**

Policy which details strict operational hours, which cause limited disruption to neighbouring residents

### **Code of Conduct**

Policy which details the rules of participation, restricted behaviours and booking conditions

## **Maintenance**

### **Community Use Agreement**

Policy which dictates damage and maintenance responsibilities of the council, school and provider

### **Booking System**

Online system which allows bookers to perform a pitch health check and report any damages before their booking

### **Facility Patrols**

Regular patrols completed by provider, police or city inspectors to ensure pitch is being used correctly and no damages are being caused

## **Safety and Security**

### **Controlled Access**

Coded entry gate with expiring codes for each booker. Clubs/Regular bookers agreement to manage attendance and prevent overcrowding of pitch

### **CCTV**

Cameras which capture the MUGA and entrances, along with signs to safeguard and discourage antisocial behaviour

### **Storage Locker**

Locker with first aid kit

### **Structural Changes**

Recessed goals and clearly defined crossbar to prevent children running into free standing goals

# Summary

This consultation aimed to engage with residents on the proposal for the development of a MUGA at the Wilberforce Primary School. We found that residents were excited about the project, with **52 of 57 respondents** to the online survey **feeling either mostly positive or positive** about the project. There was 1 respondent who felt negative about the project due to 'the design of the pitch not reflecting the dynamic community and lacking imagination'. Additionally, this respondent felt that seating provision should also be included in the space.

Overall, the main concerns which participants expressed surrounded:

1. Community Access
2. Disturbance
3. Maintenance
4. Safety and Security

Those who participated in the in-person sessions also had the opportunity to discuss how to solve the highlighted concerns and came up with list of 10 solution groups which covered majority of the concerns expressed. These solution groups included:

- Community Use Agreement
- Provider Agreement
- Steering Group
- Booking System
- Code of Conduct
- Facility Patrols
- Controlled Access
- CCTV
- Storage Locker
- Structural Changes





Westminster City Council  
Environment and Communities  
Sport, Leisure, and Active Communities  
The Pavilion,  
Paddington Recreation Ground,  
Randolph Avenue,  
Maida Vale, W9 1PD

020 7641 2012

[active@westminster.gov.uk](mailto:active@westminster.gov.uk)

[westminster.gov.uk/active](https://westminster.gov.uk/active)

 @ActiveWCC

 /ActiveWestminster

 @activewestminster